



## ZOOM BLACK MID S3S ESD FO HRO SR

Art. No. 63.503.0



- Protection:** fiberglass toe cap and flexible FAP® LITE midsole
- Plus:** ESD, BreathActive functional lining, comfortable upper and tongue padding
- Upper:** high-quality smooth full-grain cowhide
- Lining:** BreathActive functional lining
- Footbed:** evercushion® MMT
- Sole:** MOTION PWR – 300°C heat resistance, slip resistant rubber outsole with PWR.FOAM midsole for excellent cushioning, energy return and stability
- Colour:** black
- Sizes:** 39 - 48

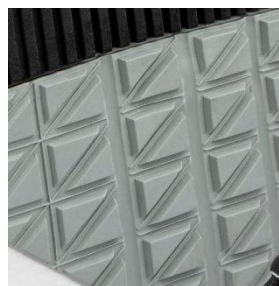
Also available:



ZOOM BLACK LOW



RIVAL BLUE/ORANGE MID



### MOTION PWR SOLE

The MOTION PWR sole is the centerpiece of our new and athletic PUMA safety footwear line. The PWR.FOAM® midsole, our latest high-quality performance foam technology, delivers maximum responsiveness at a featherlight weight. Heat-resistant up to 300°C, the various tread zones in our outsole ensure optimum grip.



### FAP® LITE - FLEXIBLE ANTI-PERFORATION

The latest generation of metal-free penetration protections:

- 50% lighter
- very high flexibility
- better cushioning and pressure elasticity
- cooling effect through breathability and sweat absorption

### PWR.FOAM®

The latest innovation from top-level competitive running, engineered and evolved for the safety shoe sector. Our advanced manufacturing process transforms the PWR.BEADS® into a super-lightweight, permanently elastic outsole with outstanding and long-lasting energy return of up to 70%



### EVERCUSHION® MMT FOOTBED

With its specially developed, lightweight and particularly open-pored foam, the evercushion® MMT footbed is equipped with superior moisture management (Moisture Management Technology – MMT). It delivers extreme cushioning, eases the strain on joints and muscles and is breathable. The non-slip textile lining keeps the shoe perfectly positioned in the shoe.