

PRODUCT DATA SHEET



FUSE TC GREEN DISC LOW S1P ESD SRC

Art. No. 64.421.1



- Protection:** fiberglass toe cap and flexible FAP® midsole
Plus: FUSE.TEC® technology, ESD, toe cap protection, PUMA DISC lacing system
Upper: durable microfiber with breathable Sandwich Mesh
Lining: BreathActive functional lining
Footbed: evercushion® CUSTOM FIT MID
Sole: double density PU sole naturalFLEXMOTION® with iCELLelement, very flexible, extreme cushioning and slip resistant
Colour: black green
Sizes: 40 - 49

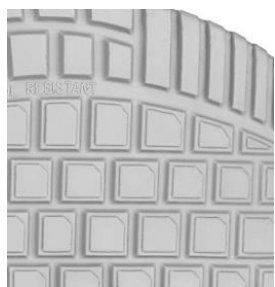
Also available:



OMNI ORANGE LOW
643620



FUSE TC GREEN LOW
644210



naturalFLEXMOTION®

The double density PU sole consists of an enormous soft and cushioning PU midsole and a very flexible PU outsole. The wafer profile provides extra support on industrial floors, is easy to clean and offers firstclass „LadderGrip“.



iCELL

The hard-wearing honeycomb structure of the iCell element improves the cushioning while enhancing the shoe's stability, guidance and comfort.



DISC

The original PUMA DISC lacing system. Press, turn and the shoe sits perfectly on the foot. The precisely adjustable twist lock of the PUMA DISC lacing system is as simple as it is ingenious.



FUSE.TEC®

Reinforcement elements are seamlessly welded using FUSE.TEC®. Therefore it is possible to work without seams in areas subject to high stress (flex zones). The shoe is more flexible, resistant and has a perfect fit.