

# PRODUCT DATA SHEET



## CASCADES DISC MID S3 CI HI HRO SRC

Art. No. 63.021.1



- Protection:** fiberglass toe cap and flexible FAP<sup>®</sup> midsole  
**Plus:** CORDURA<sup>®</sup>, PUMA DISC lacing system  
**Upper:** greased full leather  
**Lining:** BreathActive functional lining  
**Footbed:** evercushion<sup>®</sup> BA+  
**Sole:** PU/rubber sole SCUFF CAPS EVO - 300°C heat resistant, slip-resistant on unsurfaced grounds, mud-releasing  
**Colour:** black-gray  
**Sizes:** 39 - 48

Also available:



CASCADES MID  
630210



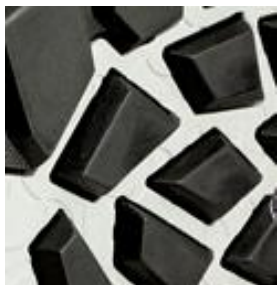
CASCADES LOW  
640720



CASCADES DISK LOW  
640721



COMPOSITE SLIP RESISTANT HRO SOLE HEAT INSULATED COLD INSULATED BIG SIZES IQ.CELL



### RUBBER OUTSOLE SCUFF CAPS EVO

It is obvious that the heavy duty pattern of this hard-wearing, up to 300°C heat resistant HRO rubber outsole has been designed for optimum safety and performance, especially on unsecured grounds.



### SCUFF CAP

Extra high scuff cap for wearers who kneel a lot during their work.



### VOLUME PLUS<sup>48</sup>

The special shape of the last provides more space to the small toes and the ball of the foot. This extra comfort is available up to size 48.



### DISC

The original PUMA DISC lacing system. Press, turn and the shoe sits perfectly on the foot. The precisely adjustable twist lock of the PUMA DISC lacing system is as simple as it is ingenious.