

PRODUCT DATA SHEET



AIRTWIST BLACK DISC LOW S3 ESD HRO SRC

Art. No. 64.465.1



- Protection:** fiberglass toe cap and flexible FAP® lite midsole
- Plus:** ESD, PUMA DISC lacing system, reflecting elements, TPU heel protection, TPU eyelet element for additional strengthening
- Upper:** Hydrophobic treated suede leather
- Lining:** BreathActive functional lining
- Footbed:** evercushion® CUSTOM FIT MID
- Sole:** URBAN EFFECT Triple density - 300°C heat and slip resistant rubber outsole with rotation point and twolayered midsole made of EVA and continuously high performance EFFECT.FOAM® for excellent cushioning and energy return (70% above the standard)
- Colour:** black
- Sizes:** 39 - 47

Also available:



AIRTWIST BLK/RED LOW
644630



AIRTWIST BLACK LOW
644650



AIRTWIST GREY LOW
644610



RUBBER SOLE URBAN EFFECT

The HRO rubber sole, which is heat-resistant up to 300°C, has a special sole profile that drains off liquids and thus optimizes the grip (SRC). By increasing the point of rotation, friction and thus fatigue are greatly reduced.



EFFECT.FOAM®

Tireless comfortable!

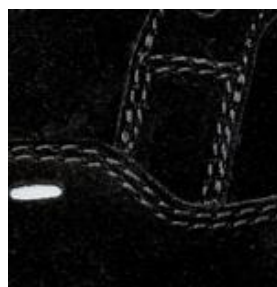
- 60% energy return
- 47% less impact on bones and joints*
- extremely powerful and light
- permanently high level of comfort for fatigue-free work

* Dynamic energy absorption reduces the impacts to 1.6KN, the average for safety shoes is 3.0KN.



DISC

The original PUMA DISC lacing system. Press, turn and the shoe sits perfectly on the foot. The precisely adjustable twist lock of the PUMA DISC lacing system is as simple as it is ingenious.



UPPER

The homogeneous and insensitive surface of the suede leather makes this shoe more breathable and resistant in tough everyday work.